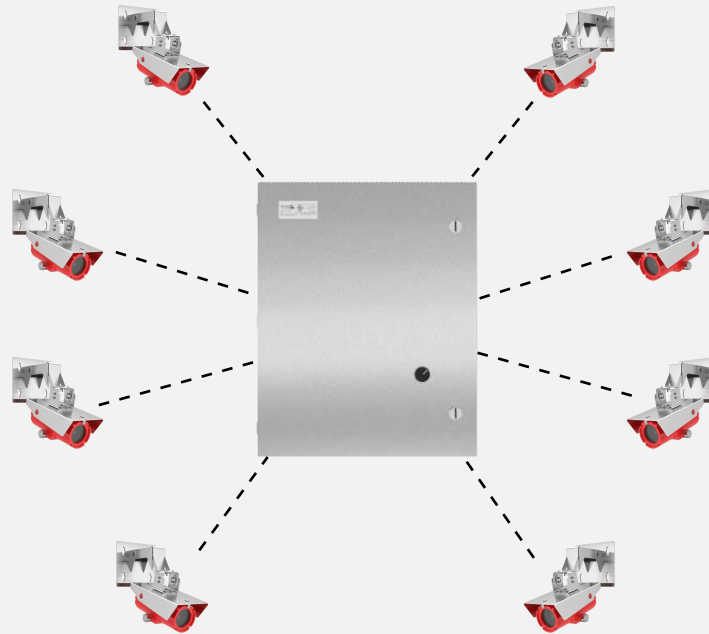


Spectrum 1414-8-LTE

Class I Division 2 - UL Listed Industrial Control Panel



Features

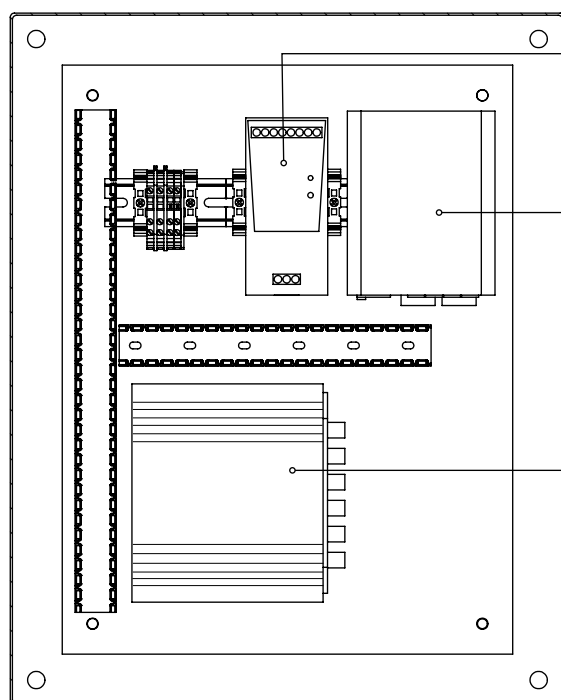
- Supports up to 8 POE+ Devices
- Define policies through centralized cloud-based management for easy deployment at scale.
- Gain fast, reliable connectivity with an embedded Cat 11 or Cat 18 LTE modem.
- Add a second cellular modem for simultaneous dual-carrier LTE connectivity.
- Prioritize access on public safety networks for reliable, secure connectivity.
- Deploy Wave 2 dual-band, dual-concurrent, Gigabit Wi-Fi for the best possible connections.
- Integrate into Automatic Vehicle Location (AVL) systems with Active GPS.
- Provide a ruggedized solution to endure harsh environments.
- Configure GPIO ports for IoT and vehicle integrations.

Specifications

Spectrum 1414-8-LTE

General

Dimensions	406.3 x 211 x 507.9 mm (16 x 8.31 x 20 in.)
Weight	18kg (40lbs)
Material	316 Stainless Steel
Operating Conditions	-25°C to +40°C
Storage Conditions	-40°C to +85°C
UL Listed File Number	E481600
Input	120VAC 60HZ 10A
Output	IEEE 802.3at 240W
Power consumption without POE	11.1 Watts
MAC Address	8K
Backplane	24Gbps
Serial Console	RJ-45
Status LEDs	System, Power 1, Ring Master. Coupling, Power 2, Alarm, Port status
Dip Switch (2-pin)	Rapid Ring Setting
Digital output (relay)	24 VDC/1A
Digital input	Level 0 (Low): 0V to 6V Level 1 (High): 10V to 24V
Explosion-proof Certifications	Class I Division 2 Groups A,B,C,D
Certifications	EMI: CE, FCC Part 15, EN61000-4-2, EN61000-4-3, EN-61000-4-4, EN61000- 4-5, EN61000-4-6, EN61000-4-8, IEC60068-2-32 (Free fall), IEC60068-2-27 (Shock), IEC60068-2-6 (Vibration), NEMA TS-2 Safety: IEC60950-1, UL Class 1/Div 2
Standards	IEEE 802.3 IEEE 802.3u IEEE 802.3z IEEE 802.3ab IEEE 802.3x IEEE 802.3ad IEEE 802.1p IEEE 802.1Q IEEE 802.1w IEEE 802.1s IEEE 802.1X IEEE 802.1AB IEEE 802.1ad IEEE 802.3af IEEE 802.3at IEEE 802.3ah IEEE 802.1ag IEEE 802.1D IEEE 1588 v2 ITU-T Y.1731 ITU-T G.8031 ITU-T G.8032 IEC62439-2
Warranty	5-year limited warranty, see spectrumcamera.com/warranty



SECTION A-A

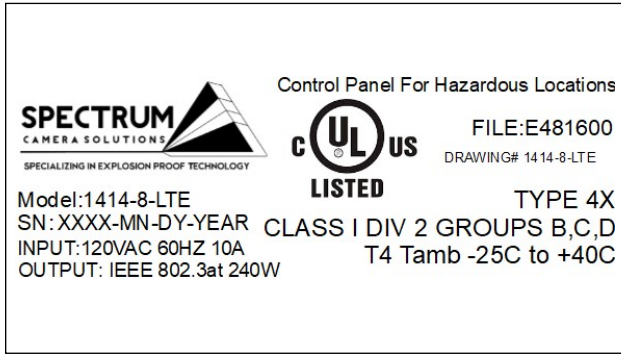
Class I, Div 2 Power Supply 240W
30-56V adjustable 5A

Managed Hardened Gigabit Ethernet PoE+ Switch
(8) 10/100/1000 Base-T PoE+ Ports (4) 100/1000 Base-X SFP Slots
note: SFP MODULE NOT SUPPLIED

Cradlepoint IBR Rugged Series

This LTE router for mass transit, public safety, and other vehicles can support adding an LTE modular modem using the optional COR extensibility dock. This ruggedized platform is IP54 rated, Class I, Div 2 certified for hazardous locations, and it withstands high temperatures, shock, and vibration to maintain a reliable connection.

Approvals



- This LTE router for mass transit, public safety, and other vehicles can support adding an LTE modular modem using the optional COR extensibility dock. This ruggedized platform is IP54 rated, Class I DIV 2 for hazardous locations, and it withstands high temperatures, shock, and vibration to maintain a reliable connection.
- Store-and-forward architecture with 24 Gbps switching bandwidth
- Supports jumbo frames up to 9.6k bytes
- Ring Protections
 - Industry standard G.8032 Ethernet Ring Protection Switching (ERPS)
 - Support G.8032 Ethernet Linear Protection (ERPS)
 - Rapid Ring with recovery time less than 20ms
- Radius, TACACS+, User Authentication
- Supports LLDP Protocol
- HTTPS/SSH v1/v2 Network Security
- Temperature Detection and Alarm
- Support WH Watchdog to resume operation from CPU hang up
- IEEE 1588 v2 PTP
- Port Mirroring
- Power-over-Ethernet
 - Port configuration
 - Auto Power Reset (APR)
 - DHCP per port
 - Always on PoE
 - PoE Scheduling
 - Complies to IEEE 802.3 at, IEEE 802.3af
- IEEE 802.3ad LACP, up to 6 groups and up to 4 ports per group
- Up to 4K VLAN groups, port based, IEEE 802.1Q tag, Q-in-Q, MAC based VLAN, management VLAN, Private VLAN Edge, Voice VLAN, GVRP
- ACL - up to 256 entries, drop or rate limiting based on: Source and Destinations MAC, VLAN ID and IP address, protocol, port, DSCP/IP precedence, TCP/UDP source and destination ports, IEEE 802.1p priority, Ethernet type, ICMP