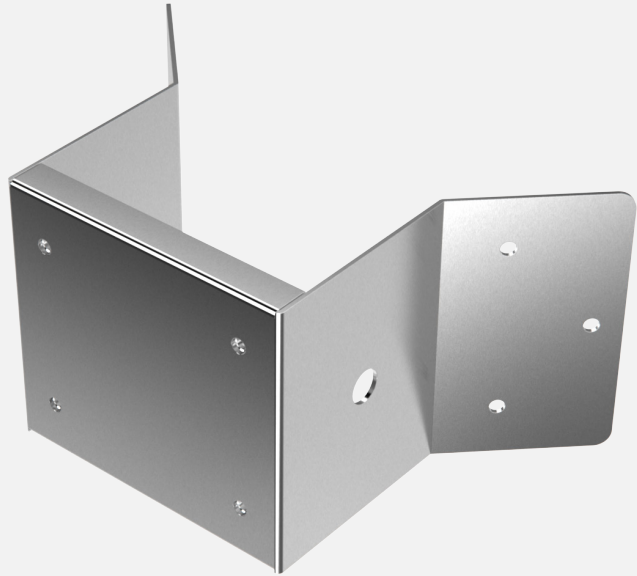


Spectrum SCS-CM

Corner mount

Features

- Mount cameras on corners
- Resistant to corrosion
- Sturdy and safe
- Stainless steel
- Featuring RSK entry point



Description

Spectrum SCS-CM corner-mount is designed as an accessory to D & F-Series cameras. Together with the required wall-mount, it allows for the cameras to be mounted on corners. The corner-mount is ideal for onshore, offshore, marine and heavy industrial applications.

Specifications

Dimensions 415 x 210 x 252 mm (16.33 x 8.27 x 9.92 in)

Weight 4.8 kg (10.6 lb)

Material Stainless steel

Maximum Load Tested 1000 kg (2200lb)

Compatibility D & F-Series Cameras

