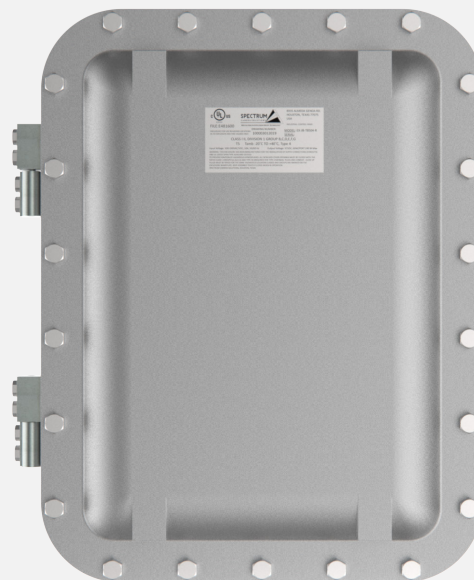


# Spectrum EX-JB-T8504-R

Explosion-proof junction box

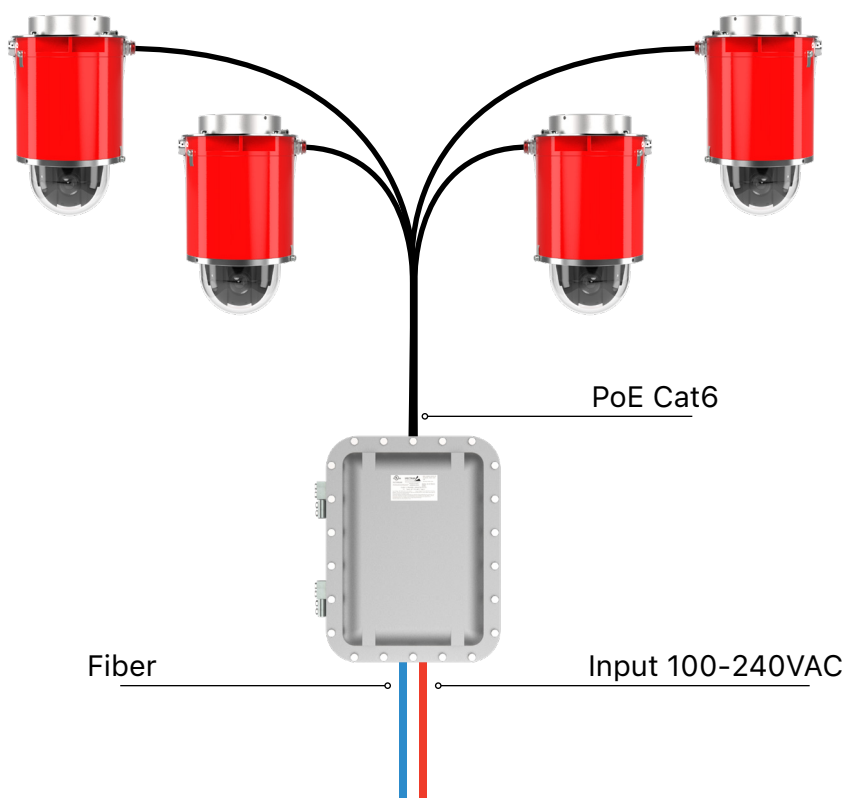
## Features

- 60W per port, 240W power budget
- Compliant with High PoE 60W
- High availability with Rapid Ring
- Dual DC power redundancy
- NEMA TS-2 Compliant
- UL Listed
- Class I/II
- Division 1
- Groups BCDEFG T5



## Description

Spectrum EX-JB-T8504-R houses the AXIS T8504-R Industrial PoE Switch. The switch is a 4-port managed industrial PoE++ Gigabit switch. In addition, the switch is equipped with two RJ45 and two SFP data ports that allows for extra devices to be connected. The switch uses the same intuitive administrator interface as AXIS T85 PoE Network Switch Series. The ruggedized switch is perfect for challenging environments when mounted inside a surveillance cabinet. It is designed to withstand shock, vibrations and temperatures from -20°C to +40°C (-4°F to +104°F), making it perfect for high demanding installations such as alongside highways and tunnels. UL Listed Class I II Div 1 Gr. BCDEFG T5



# Specifications

## Spectrum EX-T8504-R



### Network

Security	Password protection, HTTPS encryption, VLAN
Supported Protocols	IPv4, IPv6, HTTP, HTTPS, SMTP, Bonjour, UPnP® , SNMP v1/v2c/v3, DNS, NTP, RTSP, TCP, UDP, IGMP, ICMP, DHCP, ARP, SSH, RADIUS, TACACS+, Syslog, IEEE 802.1X, 802.1Q (VLAN), LLDP, LLDP-Med, STP, MSTP, RSTP, LACP, RRPP
Throughput	11.9 Mpps
Switch Capacity	16 Gbps
MAC Table	8 K
Jumbo Frames	9216 Bytes

### General

Switch	AXIS T8504-R Industrial PoE Switch - Part number: 01633-001
Dimensions	444.5 x 342.9 x 215.9 mm ( 17 ½ x 13 ½ x 8 ½ in. )
Weight	28.21 kg ( 62.2 lb )
Material	Aluminum
Operating Conditions	-20°C to +40°C ( -4°F to +104°F )
Storage Conditions	-40°C to +85°C (-40°F to 185°F)
UL Listed File Number	E481600
Input Voltage	100-240VAC/VDC , 10A, 50/60 Hz
Output Voltage	57VDC , 60W/PORT 240 W Max
PoE Class	Power over Ethernet Plus (PoE+) IEEE 802.3at Type 2 Class 4
PoE Output	Up to 60 W per port Power budget: 240 W
HS Code (Schedule B)	8529.90.3800
Explosion-proof Certifications	Class I/II Division 1 Groups BCDEFG T5
Approvals	<b>EMC</b> EN 55032 Class A EN 55024 FCC part 15 Subpart B Class A ICES-003 Class A VCCI Class A RCM AS/NZS CISPR 32 Class A EN 50121-4 EN 61000-3-2, EN 61000-3-3, EN 61000-6-1, EN 61000-6-2, EN 61000-6-3, EN 61000-6-4 IEC 62236-4 <b>Safety</b> IEC/EN/UL 60950-1 <b>Environment</b> IEC 60068-2-6, IEC 60068-2-27, 60068-2-31 (Free fall - Procedure 1) NEMA TS-2-2003 v02.06, subsection 2.2.8 and 2.2.9
Management Software	AXIS Device Manager
Warranty	5-year limited warranty, see <a href="http://spectrumcamera.com/warranty">spectrumcamera.com/warranty</a>

# Approvals

		8935 ALMEDA GENOA RD. HOUSTON, TEXAS 77075 USA
FILE:E481600	DRAWING NUMBER: 100003012019	INDUSTRIAL CONTROL PANEL MODEL: EX-JB-T8504-R SERIAL:
ENCLOSURE FOR USE IN HAZARD LOCATIONS AS TO EXPLOSION AND FIRE HAZARD ONLY.		
CLASS I II, DIVISION 1 GROUP B,C,D,E,F,G T5 Tamb -20°C TO +40°C, Type 4		
Input Voltage: 100-240VAC/VDC, 10A, 50/60 Hz      Output Voltage: 57VDC, 60W/PORT 240 W Max		
WARNING: THIS ENCLOSURE HAS BEEN MANUFACTURED FOR THE INSTALLATION OF SUPPLY CONNECTIONS (CONDUITS) AND UL LISTED OPEN TYPE AUXILIARY DEVICES TO PREVENT IGNITION OF HAZARDOUS ATMOSPHERES. ALL NONUSED COVER OPENINGS MUST BE CLOSED WITH THE RATED CLASS I, GROUPS B,C,D,E,F,G AND TYPE 4X (REQUIRED FOR TYPE 4 RATINGS) PLUGS AND CONDUIT. CLOSE UP PLUGS MUST BE RATED FOR THE SAME HAZARDOUS LOCATION CLASSES AND GROUPS ARE MARKED ON THE ENCLOSURE NAMEPLATE. KEEP ASSEMBLY TIGHTLY CLOSED WHEN IN OPERATION SPECTRUM CAMERA SOLUTIONS, HOUSTON, TEXAS		